



TOGETHER WE WILL GIVE OUR
CHILDREN THE ROOTS TO GROW,
AND THE WINGS TO FLY



Prospectus 2024

St John's C of E VA First School
Christchurch Street East
Frome
Somerset
BA11 1QG

Tel: 01373 462251
Email: office@stjohnsfrome.co.uk

Website: www.stjohnsfrome.co.uk

Welcome to St John's Church of England Voluntary Aided First School



We hope you enjoy finding out about our school in our prospectus. We want you to see how proud we are of our school, and how much we enjoy all working together as a caring and respectful community of children, parents, teachers and governors.

St John's is a Church of England First School for up to 300 children aged 4 to 9 years in the heart of the busy market town of Frome and we work closely with 17 other schools in the Frome Learning Partnership. We also have strong links with the many nurseries which feed into us, and with the two middle schools to which most of our children transfer at the age of nine.

At St John's, we learn, work and play together in a happy, stimulating and secure environment, where everyone is valued and encouraged to achieve their best. Our mission statement is 'Together, we will give our children the roots to grow and the wings to fly' which is achieved through the solid foundation to learning that the children gain at St John's, preparing them for their future learning and experiences.

The staff team value the important role that they have to support children's learning and personal development. Positive relationships are developed to support the children in feeling safe and secure at school in order that they flourish in their development and learning.

Mrs Teresa Gilbert

Headteacher

School Information

Address: St John's C of E VA First School
Christchurch Street East
Frome
Somerset
BA11 1QG

Tel: 01373462251

Website: www.stjohnsfrome.co.uk

Headteacher Mrs Teresa Gilbert

Chair of Governors Ms Kerry Smith

Pupils on Roll 202 (September 2024)

Type and Age Range First School 4 – 9 years

School Hours 8.45am – 3.15pm

Local Education Authority Somerset County Council
County Hall
Taunton
TA1 4DY
Telephone 01823 355455

Diocese of Bath and Wells Education Department
The Old Deanery
Wells
Somerset
BA5 2UG
Telephone 01749 670777



Our Vision and Values

St John's C of E VA First School Mission Statement

'Together, we give our children the roots to grow and wings to fly.'

As John the Baptist prepared the way for Jesus, here at St John's, we strive to prepare children for life – *'life in all its fullness'* (John 10:10).

As a fully inclusive Church school, we are rooted in hope. We aspire to nurture and help our children to be the best versions of themselves.

Our school staff, parents and governors work together to help our children flourish as respectful, confident and aspirational citizens who seek to positively contribute to the school community, local community and the world beyond.

We want children attending St John's CEVA First School to:

- experience learning in a nurturing and supportive environment
- develop values and skills that help them on their learning journey and beyond,
- enjoy their learning and be inspired to do their best in everything,
- work together with others and develop the skills of team work, resilience and tolerance,
- experience a wide range of learning opportunities with a curriculum that is aspirational, stimulates curiosity and enjoyable,
- gain an understanding of their individuality and express themselves with confidence
- develop friendships that are secure and provide positive memories of school life
- experience roles of responsibility in class and across the school

Our Shared Values of **Kindness, Empathy and Resilience** are taught and promoted across the school in classes, Collective Worship and through our school ethos.

Our Curriculum Drivers of **Aspiration, Curiosity, Enjoyment**, promote the learning values that underpin our curriculum and what is taught in school.

Like birds who nest in trees, the St John's community aim to nurture their young, who then go on to fly out into the world and flourish.

About Our School

Most of our children live in the immediate locality but some travel across town to be with us. We are a diverse school community, which has been further enriched in the past few years by the arrival of several families from overseas, helping us learn about, and share at first hand others' experiences and cultures.

Our children take a pride in their school and make the most of the opportunities with which it presents us all.



The school was built in the 1930s and has large airy classrooms with high ceilings. Our magnificent hall has a splendid view of our church and of the town.

We have a number of outdoor areas including two playgrounds for general use, a grassed garden area, brand new pirate ship play area and a shady and the third a tiger mulch and garden area. There is an additional sheltered quiet area with tables for those who prefer to be less energetic.

We also have a library and various small group work spaces.

Our Reception and Year One classes have their own secure outdoor areas for learning through play.

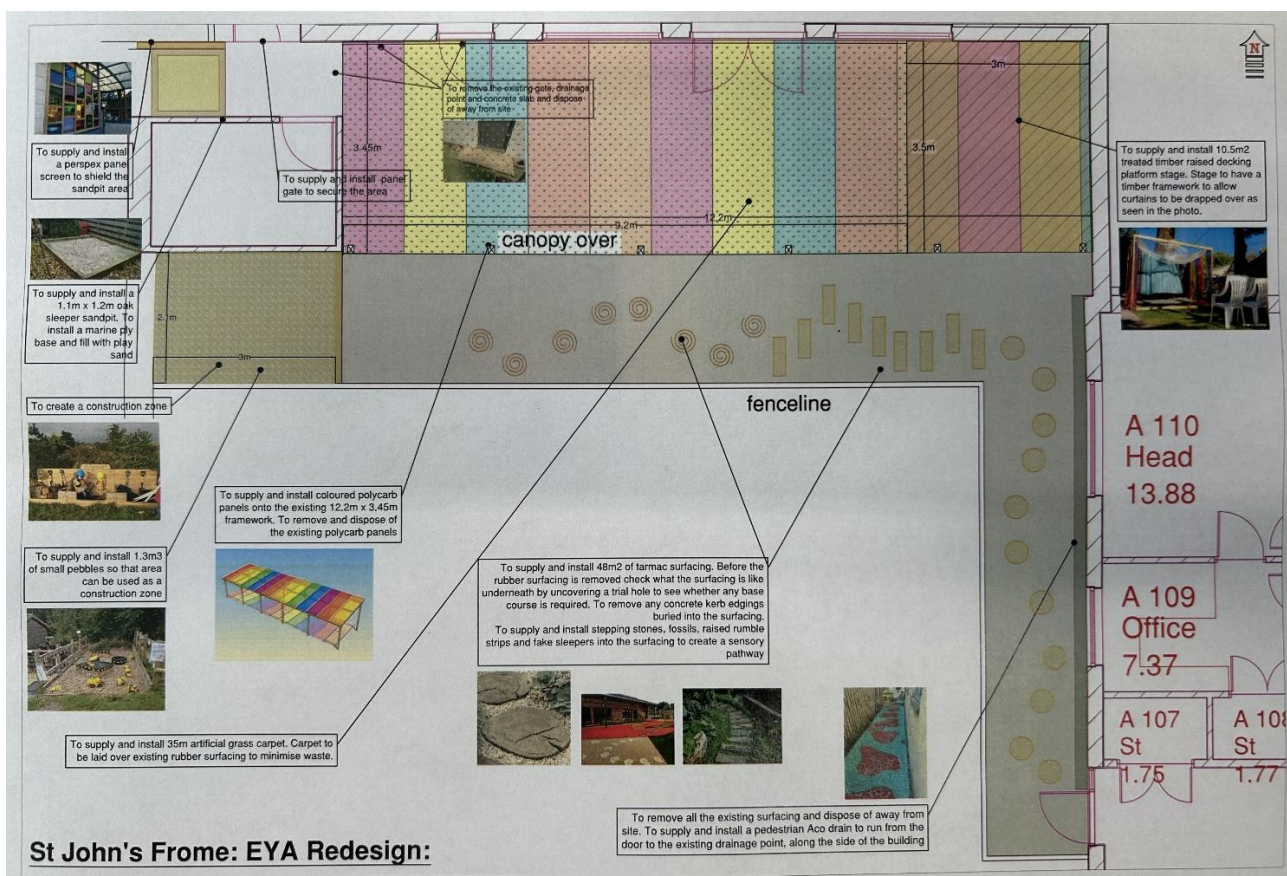


New in 2024 – Early Years Outdoor Learning Area

We are in the process of redeveloping our dedicated Early Years outdoor learning area. The project is due to be completed by the end of October 2024 and the revamped area will offer enhanced facilities for our reception children. The space will include:

- A variety of surfaces including artificial grass carpet, raised decking area and sensory walkway
- A permanent sand pit
- Dedicated areas for different types of learning through play (Construction area, water play, mark making and sound making)

Below is a copy of the plan – why not come back for a visit later in the year to see the finished product!*



* the coloured polycarbonate panels shown are phase 2 of the project and will be completed in 2025

New in 2024 – Pirate Ship Play Equipment

Our brand new pirate ship play equipment will give children the opportunity to play and learn through climbing and scrambling as well as stimulating imaginative play.

We are incredibly grateful to have received support from Frome Town Council, the Friends of St John's and some willing volunteer helpers in completing this project. The ship will be around for many years to come for the current and future children of St John's.

School Staff

The **Head Teacher**, assisted by the **Deputy Headteacher** is responsible to the Governors for the day to day running of the school and for bringing the school's vision to reality.

The **Senior Leadership Team (Deputy Headteacher, SENCO and School Business Manager)** supports the Head Teacher with the overall running of the school. They take charge of the school in the absence of the Headteacher.

The **School Business Manager** has responsibility for managing Finance, Premises, HR and other administrative work. She is supported by our **Administrator** and **Finance Assistant**.

The **SENCO** (Special Educational Needs and Disability Coordinator) is a teacher who ensures that the special educational needs of our children are being met by staff and the school. Liaison with outside agencies is a key part of this role.

Class Teachers are responsible for the teaching and learning of their class and each has responsibility for an area of the curriculum.

Learning Support Assistants are deployed across the entire school. They have a key role in helping children overcome barriers to learning. They may support in class or deliver specific programmes for small groups or for children who need some extra support, for example with Reading, Spelling, Maths, Co-ordination or Social Skills.

Higher Level Teaching Assistants carry some additional responsibilities, including some whole class teaching to release teachers for assessment, planning and preparation time and to cover short term absence.

Midday Supervisors look after the children at lunchtime, supervising them in the hall and on the playgrounds.

The **Caretaker** maintains the school premises both during and after school. He is supported by a team of **Cleaners**.

For the safeguarding of your children, all those who work in school either on a paid or voluntary basis are required to go through safer recruitment checks, as set out in the government guidance, 'Keeping Children Safe in Education'.

Classes

Our classes are all named after trees

Class	Year Group	Age of Children	Key Stage
Oak	Reception	4 - 5	Reception
Ash	Reception and Year 1	4 - 6	Reception / Key Stage 1
Hazel	1 and 2	5 - 7	Key Stage 1
Fir	2	6 - 7	Key Stage 1
Rowan	3	7 - 8	Key Stage 2
Willow	3	7 - 8	Key Stage 2
Sycamore	4	8 - 9	Key Stage 2
Maple	4	8 - 9	Key Stage 2

The Key Stage 1 classes are all situated on the ground floor, and Key Stage 2 are upstairs.

We have a number of rooms for interventions and small group work.

Children are also organised into House Teams named after birds – Robins (red), Woodpeckers (green), Goldfinches (yellow) and Kingfishers (blue). Children can earn house points for effort, excellent work and adhering to the school rules.



The School Day

The timetable below details our normal school day. Exact timings may be subject to change each academic year.

- 08.00 Early Birds (Bookable Wraparound Care provision)
- 08.35 Doors Open – children make their way to class – Early Morning Activity
- 08.45 Doors Close / Registration
- 08.55 Registers close and lesson time begins.

During the morning, each class has a playtime followed by further lesson time.

12.00 – 13.00 Reception and Key Stage 1 lunch and playtime

12.10 – 13.10 Key Stage 2 lunch and playtime

Various start times for afternoon lesson time depending on Year Group. Reception and EYFS and Key Stage 1 also have an afternoon playtime.

14.40 Collective Worship

15.15 End of School

15.15 – 17.30 After School extra-curricular clubs and childcare

On Mondays, instead of Collective Worship, we have Headteacher's Awards. If your child is receiving an award, you will be invited to watch them collect their award.

The School is open for pupils for 190 days a year. Details of holidays and closures due to In-Service Training are published on our website and given as far in advance as possible.

<https://www.stjohnsfrome.co.uk/term-dates>

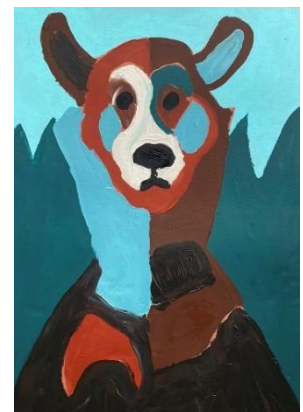


Extra-Curricular Activities

We run a programme of extra-curricular activities within our after school wraparound care provision (see p15 for more details). We also have a number of visiting music teachers.

In the 2024-25 academic year extra-curricular activities include:

- Art Club
- Street Dance
- Multi-sports
- Games night



The Curriculum

The curriculum at St John's C of E VA First School is based on a clear set of aims, which reflect our educational philosophy and covers the requirements of the Early Years Foundation Stage and then the National Curriculum.



When children start school, they join a Reception class, which is the final year of the Early Years Foundation Stage. They continue to work on the Early Years Foundation Stage Curriculum, which they accessed at nursery school. The areas of the EYFS Curriculum are:

- ❖ Communication and Language
- ❖ Personal, Social and Emotional Development
- ❖ Physical Development
- ❖ Literacy
- ❖ Mathematics
- ❖ Understanding the World
- ❖ Expressive Arts and Design

On entry to Year 1, children start to work from the National Curriculum and will continue to follow the National Curriculum for the rest of their time in school. The subjects within the National Curriculum are as follows:

Core Subjects:

- ❖ English
- ❖ Mathematics
- ❖ Science

Foundation Subjects:

- ❖ Art and Design
- ❖ Computing
- ❖ Design and Technology
- ❖ Modern Foreign Language (KS2 children only)
- ❖ Geography
- ❖ History
- ❖ Music
- ❖ Personal, Social, Health, Economic and Relationships Education
- ❖ Physical Education



The Importance of Phonics

When children join the school in Reception they start to learn that letters represent sounds and then that two letters together can represent a sound. They quickly build up their knowledge of letter sounds in their phonic lessons and then how to use these to read simple words. We use the Read Write Inc phonic scheme for phonics teaching until children are reading the scheme books with fluency and confidence. Phonics is the key strategy for teaching children to read and spell and children have daily phonic lessons. Children have regular support in school for their phonics learning and we value the support given from home to keep the children practising their phonic knowledge, word reading and then with reading their books.

Curriculum Teaching

We use a theme approach to teaching and learning to ensure that the children develop their learning in a meaningful way. We make links between subjects where possible but always ensure that the children understand the key skills and knowledge for individual subjects. Teachers plan lessons and activities that interest and excite the children and ensure that they gain opportunities to enrich their learning through workshops and visits. We also use quality children's literature to support the children's reading and writing development across the school.

Our curriculum for each year group is available on the school website. We publish the theme and related learning that each year group is doing at the beginning of each term. We also share each year group's core learning for the following week through messages on SeeSaw.

We run a number of cross-school projects, theme days and focus theme weeks, which in recent years have included:

- ❖ Faith Week
- ❖ World Book Day
- ❖ Specific Authors or Stories
- ❖ Environment Week
- ❖ Sports Week
- ❖ The Big Draw
- ❖ Fundraising Days for Children in Need, Comic Relief, Save the Children Christmas Jumper Day

Visitors to the school, and educational visits, play an important part in our exciting curriculum.

A residential visit (2 nights) is offered to pupils in Year 4.



Music

Music is very important to our school; we enjoy singing together as a whole school in Collective Worship and within weekly music lessons. Peripatetic Music Lessons are also available at an additional cost to parents for piano lessons or to play electric instruments in RockSteady lessons



Meeting Individual Needs

It is our aim that every child has the best possible education and the opportunity to fulfil his or her potential. We want all our children to play a full part in the life of the school and community and to enjoy their learning.

Special Needs Provision

The Special Educational Needs and Disabilities Policy at St John's C of E VA First School complies with the requirements of the 2014 Code of Practice.

Children experiencing persistent difficulties or making insufficient progress may need to access additional or different support. This support could take the form of advice from an external professional such as an Educational Psychologist, a Speech & Language Therapist or a School Nurse. It may also include provision of a modified curriculum.

A vital part of our Special Educational Needs provision is support from parents and carers:

- ❖ to help children practise key skills on a regular basis at home
- ❖ to work in partnership with school staff to provide the best learning opportunities for the child
- ❖ to share information about their child, particularly in respect of relative strengths and areas of concern.

The SEN and Disabilities Policy is available on the school website along with the school's offer for children with SEND. This details the support the school is able to provide, and how parents/carers can find out more about the services that might be available to support their child and other close family members.

<https://www.stjohnsfrome.co.uk/send>



Behaviour

As a school we feel it is important to promote a caring and supportive environment to enable all members of the school community to feel secure and respected.

Our School Behaviour Expectations are for children to be:

- ❖ Ready
- ❖ Safe
- ❖ Kind

These expectations are referred to regularly throughout the school day to ensure that the school is a calm and safe environment for children to learn and play within. Adults communicate with the children about these expectations and the focus is on the behaviours and attitudes that we want to see. The agreed Behaviour and Relationships Policy (available on our School Website) ensures that there is consistency, and that there are high expectations set, from adults to support the children in doing the right thing in school.

Children are taught about positive friendships and behaviour through the school ethos, values and the curriculum, such as through the Personal, Social, Health and Relationships Curriculum. We take part in Anti-Bullying week to ensure that children have an understanding of what bullying is and what to do if they think this is happening to them. We use a restorative approach to supporting children when friendships have gone wrong to help them to see the other points of view and to find a solution to the problem. Children are taught about the importance of saying sorry and finding a way to make the other person feel better.

Reward systems are in place to encourage positive behaviour such as: a well done from their teacher, 'star of the day' awards, stickers, praise postcards and termly Role Model Awards. Classes receive 'Buzz Time' (up to 30 minutes per week of free choice activity) as a reward for good behaviour in class during the week.

The children are also organised into House Teams: Robins, Woodpeckers, Goldfinches and Kingfishers. Children can earn house points for a range of things such as good work, exceptional attitudes to learning and demonstrating our school values.

To work in partnership, we ask parents and children to sign our 'Home/School Agreement' at the beginning of each year to ensure that we are working together to secure the best behaviour and attitudes from the children and adults in school.

Working in Partnership

Visiting our School

It is our aim that children feel happy, confident and secure at school and we endeavour to develop a strong supportive partnership with all of our families.

Twice a year, we invite parents and carers to formal parents' evenings when children's work and progress can be discussed in more detail with the class teacher.

In addition to these formal contact points, parents are also invited to special events such as school plays, concerts and some of our Collective Worship that take place in Church.

Our Parent / School Association – The Friends of St John's

Parents and families are also invited to take part in special events at school, such as art events, cake sales, discos and our May Fair. The committee is always keen to hear from new parents who would like to get involved.

Parent Help at Home

Children achieve best when home and school are working together in close partnership. Each term we issue information about the curriculum the children will be following and we welcome any ways in which parents can support their children's learning at home. We welcome parents and carers to interact with our online learning platform, Seesaw, to let us know about learning at home.

We encourage all children to read regularly at home and learn their spellings and number facts as directed by their class teachers.



Payments to School

We are a cashless school. All payments are made via our dedicated online payment and communication platform. If you wish to pay for something with cash, you can print a barcode from the platform to take to a local Pay Point or we can print one for you at school.

We do accept cash for some fundraising events but will let you know at the time.

Before and After School Childcare Provision

Early Birds: 8.00—8.35am / After School Club: 3.15 —5.30pm

We provide before school childcare at our Early Birds club and a programme of extra-curricular activities and childcare in our after school club.

Extra-curricular activities offered have included;

- Art Club
- Street Dance
- Multisports
- Christmas film night
- Coding club
- Games night

Rates per session for 2024-25 are given below. Rates for September 2025 will be agreed in July 2025.

Early Birds (including breakfast)	£3.00
After School club (collection by 4pm)	£3.00
After School club (collection by 4.30pm)	£4.65
After School club (collection by 5.30pm)	£7.00



School Uniform



We do not require children to wear logo items. Parents may purchase items either from our uniform supplier or generic items from local supermarkets and shops. We hold a number of second hand uniform sales each year.

St John's school colours are red, grey and white. Please choose from the following:

- ❖ Grey trousers, shorts, skirt or pinafore dress
- ❖ A red sweatshirt or cardigan (having the St John's logo on these items is optional)
- ❖ A white polo shirt, blouse or shirt (no logo required)
- ❖ Grey, red or black tights or socks
- ❖ Black or grey flat sensible shoes or boots that are fastened securely on the foot
- ❖ In summer months, a red gingham dress or gingham skirt with a white polo shirt are acceptable
- ❖ In summer months, sandals are acceptable but must be fastened securely on the foot

The following items are not acceptable items of school uniform

- ❖ Trainers (apart from as part of PE kit)
- ❖ Croc style shoes or flip flops

PE

Children need to bring a PE kit to school because getting changed is a key skill for the children to develop independence and practise fine motor skills to fasten their clothing. Support will be given to children as required. PE kit needs to be brought into school in a small bag and must include:

- ❖ Plain black shorts or leggings or tracksuit bottoms
- ❖ A red t shirt or white t-shirt
- ❖ Grey, red or black socks
- ❖ A red sweatshirt or cardigan
- ❖ Black plimsolls (daps)



Bags and Coats

- ❖ Children should bring a weather appropriate coat to school every day. In winter months they should bring a hat and gloves. In summer months they should bring a sun hat.
- ❖ Children at St John's are provided with a school book bag as a gift from the Friends of St John's.
- ❖ Reception and Key Stage 1 children should only bring their book bag and PE bag into school. No other bag is required and must not be brought into school due to limited storage space.

Jewellery and Hair Styles

- ❖ Children may wear stud or sleeper earrings in ears but we reserve the right to ask that no jewellery is worn on PE days. If children arrive to school with earrings on PE day they will be asked to either remove them or place a plaster over them.
- ❖ Children may wear a watch, but this will need to be removed for PE.
- ❖ We do not allow any smart watches in school.
- ❖ We ask that long hair is tied up for school so that hair isn't getting in your child's way during their learning.

Birthdays

- ❖ At St John's, children may wear non-uniform for the day on their birthday (or the day closest to their birthday if it falls at a weekend or in the holidays). Clothing still needs to be appropriate for school activities.

Our uniform supplier for logo items is Cosmic Monkey Schoolwear (see link below) but we recommend using local supermarkets and shops for non-logo items, to achieve best value for money. As logo items are not compulsory, cardigans and sweatshirts could also be purchased from supermarkets or local shops.

We arrange second hand uniform sales in school and advertise these as and when they happen.

<https://www.cosmicmonkey.co.uk/category/St-Johns-CE-VA-First-School-Frome>

You can view our uniform policy on the school website:

<https://www.stjohnsfrome.co.uk/key-documents>



Food and Drink at St John's

Morning Break

Parents can order milk for Reception children, which is free until their 5th birthday.

We provide a selection of fresh fruit and raw vegetables free of charge to Reception and Key Stage 1 children. Key Stage 2 children, may also bring in fresh or dried fruit or prepared vegetables for their morning snack.

Lunches

Children either have a cooked meal, provided by the school, or may bring a packed lunch from home.

Through the national Universal Infant Free School Meal (UIFSM) initiative, a hot meal can be provided for pupils in Reception, Year 1 and Year 2 at no cost to parents/carers. However, parents/carers need to register to take up this offer. Forms are available from the school office.

Some pupils in Years 3 and 4 will be entitled to receive a free hot meal at lunchtimes as part of their entitlement to Pupil Premium Grant. Application forms to see if your child is entitled to Pupil Premium, and a free hot meal at lunchtime, are available from the school office.

Pupils in Years 3 and 4 who are not entitled to Pupil Premium Grant can pay for meals. Meals need to be ordered by advertised deadlines. Our meals are provided by CleverChefs, from Selwood Academy kitchens and are of high quality. Children have a choice of main meal, dessert and accompaniments. You can see the current menu on our website

<https://www.stjohnsfrome.co.uk/food-and-drink>

Water

All children are encouraged to bring a bottle of water, to be kept in their classrooms. This is in addition to their lunchtime drink.

Nuts!

We are a nut free school. We do have children and staff with nut allergies. We ask parents to support us in keeping everyone safe and well by ensuring that no nuts, or products containing nuts, are brought into school.

Safeguarding Children

At St John's CE VA First School the health, safety and wellbeing of every child is our top priority. We expect all staff, governors, parent/carers and visitors to share this commitment to safeguarding our pupils.

All schools have a legal duty to ensure the safety and well-being of all the children in the school. They are required to appoint a Governor and a member of staff with responsibility for Safeguarding and Child Protection and to have Safeguarding and Child Protection policies and procedures in place.

We work hard to safeguard and promote our pupils' welfare, safety and health by fostering an honest, open, caring and supportive climate. Pupils' welfare is of paramount importance. We recognise that high self-esteem, supportive friends and clear lines of communication with trusted adults help all pupils and especially those at risk and in need of additional support.

Our Designated Safeguarding Lead is Mrs Gilbert

Our Deputy Designated Safeguarding Leads are Mrs Simenton and Mr Bowman

Our Safeguarding Governor is Ms Smith

St John's C of E VA First School will:

- ❖ Ensure staff members and volunteers receive appropriate and regular training relating to safeguarding and child protection
- ❖ Ensure staff members and volunteers follow the Safeguarding Policy and routines to keep children safe and pass on concerns promptly
- ❖ Establish and maintain an ethos where pupils feel secure, are encouraged to talk and are listened to.
- ❖ Ensure that pupils know that there are adults in the school who they can approach if they are worried or are in difficulty.
- ❖ Include in the curriculum, activities and opportunities for learning that equip pupils with the skills they need to help protect themselves from abuse.
- ❖ Ensure that wherever possible, every effort is made to establish effective working relationships with parents and carers and colleagues from other agencies.

We currently have access to the Frome Learning Partnership Parent and Family Support Advisors who can provide advice and support to families.

We will always discuss any concerns we have about a child's well-being and safety with their parents / carers first unless doing so could be a risk to the child. We will always follow safeguarding procedures as detailed in our Safeguarding and Child Protection Policy.

The school's Safeguarding and Child Protection Policy is available on the school website or from the school office.

The children gain many fun and memorable experiences at St John's CE VA First School.





We look forward to your child joining us!

